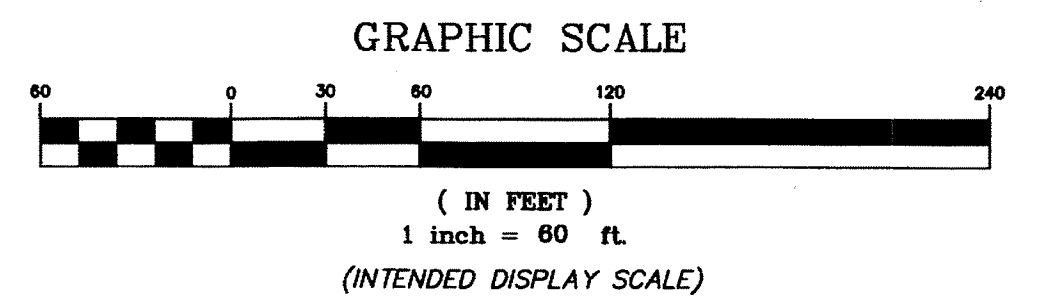
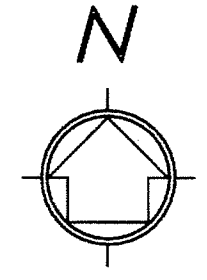


WELLINGTON TENNIS CENTER

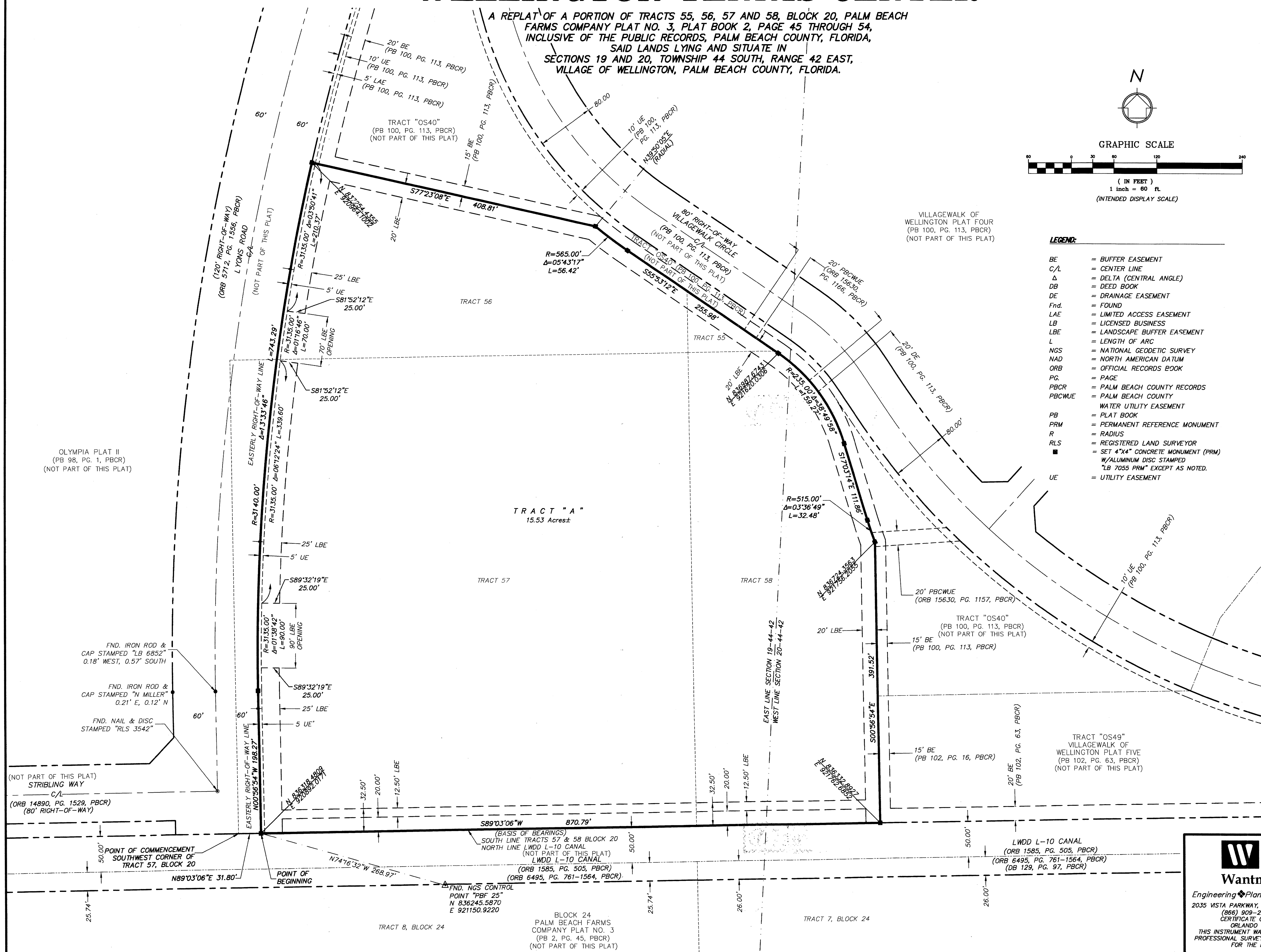
A REPLAT OF A PORTION OF TRACTS 55, 56, 57 AND 58, BLOCK 20, PALM BEACH FARMS COMPANY PLAT NO. 3, PLAT BOOK 2, PAGE 45 THROUGH 54, INCLUSIVE OF THE PUBLIC RECORDS, PALM BEACH COUNTY, FLORIDA, SAID LANDS LYING AND SITUATE IN SECTIONS 19 AND 20, TOWNSHIP 44 SOUTH, RANGE 42 EAST, VILLAGE OF WELLINGTON, PALM BEACH COUNTY, FLORIDA.

110

State of Florida }
County of Palm Beach } SS
THIS PLAT WAS FILED FOR RECORD AT _____ M.
THIS _____ DAY OF _____ A.D. 2015 AND DULY RECORDED
IN PLAT BOOK _____ ON PAGES _____ THROUGH _____
SHARON R. BOCK
CLERK AND COMPTROLLER
BY: _____
DEPUTY CLERK



- LEGEND:**
- BE = BUFFER EASEMENT
 - C/L = CENTER LINE
 - Δ = DELTA (CENTRAL ANGLE)
 - DB = DEED BOOK
 - DE = DRAINAGE EASEMENT
 - Fnd. = FOUND
 - LAE = LIMITED ACCESS EASEMENT
 - LB = LICENSED BUSINESS
 - LBE = LANDSCAPE BUFFER EASEMENT
 - L = LENGTH OF ARC
 - NGS = NATIONAL GEODETIC SURVEY
 - NAD = NORTH AMERICAN DATUM
 - ORB = OFFICIAL RECORDS BOOK
 - PG. = PAGE
 - PBCR = PALM BEACH COUNTY RECORDS
 - PBCWUE = PALM BEACH COUNTY WATER UTILITY EASEMENT
 - PB = PLAT BOOK
 - PRM = PERMANENT REFERENCE MONUMENT
 - R = RADIUS
 - RLS = REGISTERED LAND SURVEYOR
 - = SET 4"x4" CONCRETE MONUMENT (PRM)
 - W/ALUMINUM DISC STAMPED "LB 7055 PRM" EXCEPT AS NOTED.
 - UE = UTILITY EASEMENT



WGI
Wantman Group, Inc.
Engineering ♦ Planning ♦ Surveying ♦ Environmental
2035 VISTA PARKWAY, SUITE 100, WEST PALM BEACH, FL 33411
(866) 909-2220 phone (561) 687-1110 fax
CERTIFICATE OF AUTHORIZATION No. LB 7055
ORLANDO - PORT ST. LUCIE - TAMPA
THIS INSTRUMENT WAS PREPARED BY ERIC MATHEWS, P.S.M.
PROFESSIONAL SURVEYOR AND MAPPER, LICENSE NO. LS 6717
FOR THE FIRM: WANTMAN GROUP, INC.

K:\4111199.05 Village Walk Boundary Survey and Plat\dwg\119905_Plat.dwg Sh 2 Feb 10, 2015